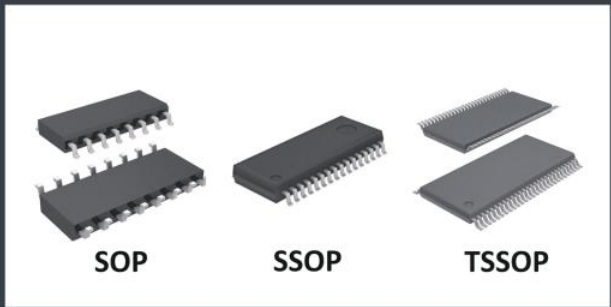


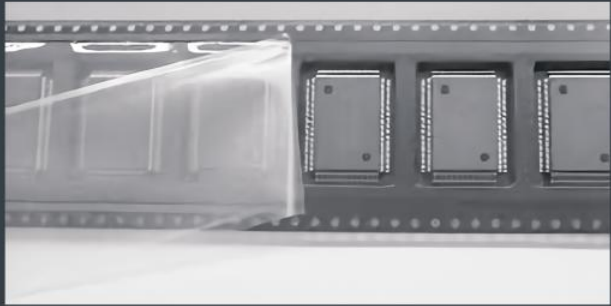
Tube



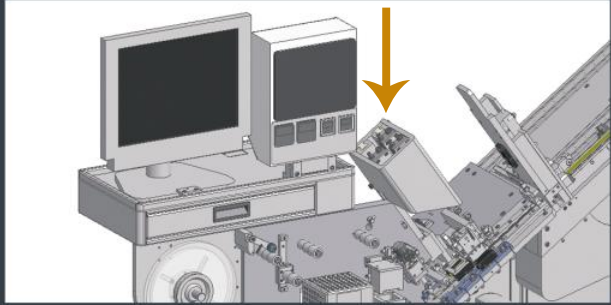
Package type



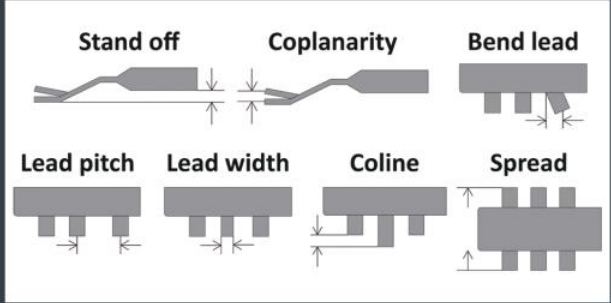
Tape & Reel



2D/3D CCD inspection



3D Inspection

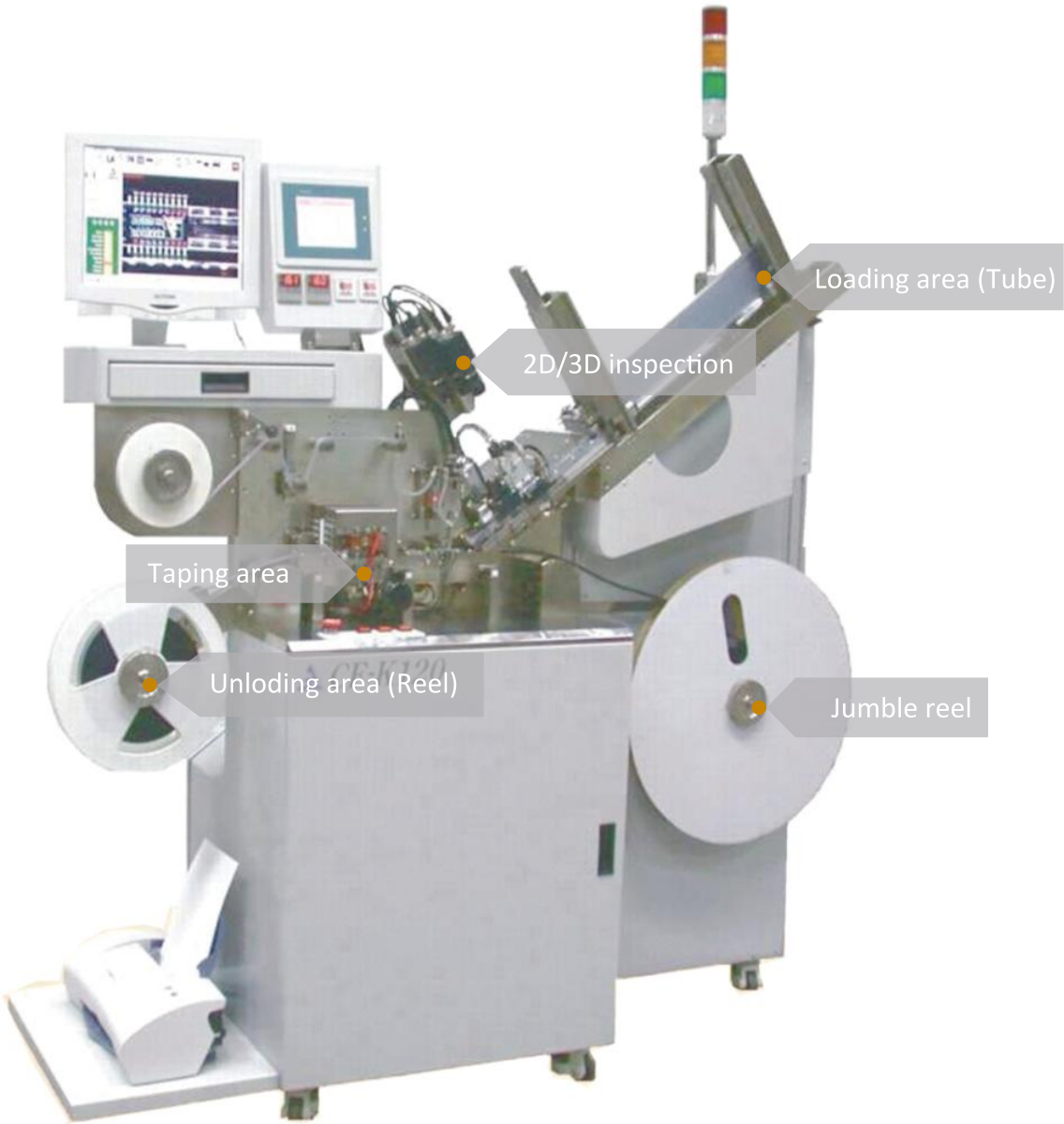


# TAPING & SCAN CF-K120

Automatic Tape & Reel Packaging Machine with 3D Inspection  
(tube type)

- Multi-tube feeding mechanism**  
Able to load 30 tubes, also can replenish tubes in dynamics.
- 3D inspection mechanism**  
It can take picture from the bottom of the product to confirm the inspection accuracy.
- Product Steering Mechanism**  
Can set the direction of the product arbitrarily, and placed the carrier tape in.
- Multi-tube discharge mechanism**  
According to the inspection items, the defective products are sorted and discharged automatically without stopping the machine.

- Two-piece stamping**  
Automatic balancing of the stamping die for easy adjustment and there are two options for stamping: cold or hot.
- Modify machine quickly**  
Replace the track of inspection module. The stamping and the tape size are adjusted by mechanism.
- High-performance man-machine interface**  
Built-in Chinese / English operation instructions, abnormal exclusion instructions, engineering statistic data beneficial to maintain and troubleshoot.



Items	Specification Descriptions
Package	SOP / SSOP / TSSOP
U. P. H.	SOP 150 mil > 5K
Jam Rate	1/2500
Over-Kill	≤ 0.5 %
GRR	< 10 %
Change Over Time	10 mins
Carrier Tape Size	Width 8~56 mm
Sealing Temp	25~250 °C
Machine Dimension	1680(W) x 600(D) x 1716(H) mm
Machine Weight	650 kg
Facility Consumption	200~240V; 1φ3W; 50/60Hz; 20A
Air Supply	5 kgf/cm², AVG 30L/min