

TOUCH PANEL

CF-V3000

Automatic Alignment Machine for Large-Size Panel

Equipped with two CCD visual alignment module, the alignment calculation can be performed simultaneously on the upper and lower films. The sticking pressure and position are all controlled digitally and can be adjusted flexibly according to the customer's product conditions.

The product (Glass/OCA/Film)

Pick and placed manually.

The internal vacuum line of the flipping table

Adopts the W-type design to establish a vacuum by the blower. The table can adjust the suction via digital frequency conversion, and seriatim detach the vacuum to avoid falling off during work.

The positioning system

Adopts two CCD inspection for horizontal positioning. The position of alignment follows from of the flip table, and the CCD takes image then correct X, Y, θ to the matching position for sticking.

The rolling and pressing module

Adopts servo torque control, which can adjust the torque value and has the roller horizontal correction function.

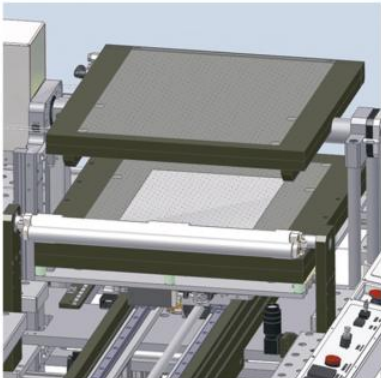
The PC control system

Touch interface and setting parameter digitally.

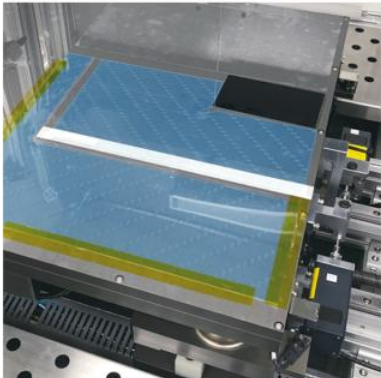


Items	Specification Descriptions
Panel Size	Max: 500 x 600 mm; Min: 350 x 290 mm
Accuracy	± 0.05 mm
U. P. H.	100 pcs/hour (size 260 x 300 mm)
Machine Dimension	2200(W) x 1000(D) x 2000(H) mm
Machine Weight	700 kg
Facility Consumption	200~240V; 1 ϕ 3W; 50/60Hz; 20A
Power Consumption	6.6 KW
Change Over Time (including CCD inspection)	< 20 mins

Binding module



Protector



CCD inspection

