

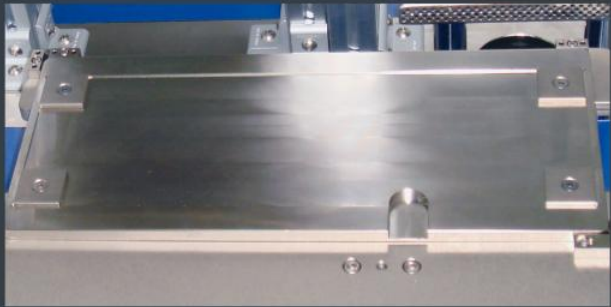
Jedec tray



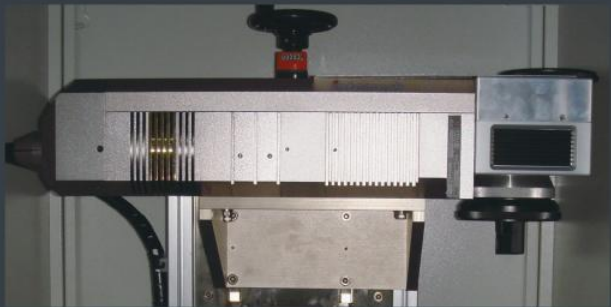
ALuminum plate



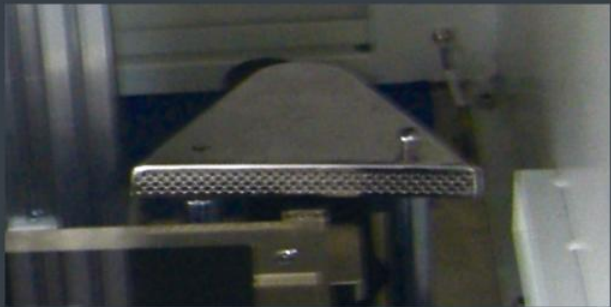
Change kit



Laser



Exhaust fan



# LASER MARKING CF-ML20

**Semi-automatic Laser Engraving / Marking Machine**  
Adopts Diode Pumped 15W, Single Head Air Cooling and Scanning head with F theta lens f=254mm °

- The track transport system**  
Adopts the X-axis servo control, and it can set the multi-point positioning arbitrarily with input parameters by the system program.
- Engravable product type**  
Aluminum plate, Resin coating plate, single tray with product. When plates size is different, kit can be adjusted and not need to be replaced.
- The dust collection mechanism**  
Can be connected to the factory vacuum system or use high power vacuum equipment.

- Windows 7 operating system and the original engraving software**  
Can input DWG, DXF, PLT, BMP and other vector image files.
- The PC control system**  
Built-in Chinese and English operation interface. It is easy and flexible to operate.
- Barcode Reader (optional)**  
Imports data to network connection systems automatically.



## Handler

Items	Specification Descriptions
Machine Dimension	1200(W) X 800(D) x 1650(H) mm
Machine Weight	250 kg
Accuracy	± 0.02 mm
Tray Type	Jedec tray
Plate Type	Aluminum plate
Plate Size	4x10 / 2x12 / 4x12 inch
Facility Consumption	200~240V; 1φ3W; 50/60Hz; 20A

## Laser

Items	Specification Descriptions
Type	Diode Pumped 15W / Fiber 20W
CW Out Power	15/20 W
Wavelength	1064 nm
Beam Quality	m <sup>2</sup> < 1.3
Stability	< 2 %
Modulation	20~80 KHz
Pulse Width	8~40 ns
Peak Power	25~200 KW/10KHz
Marking Speed	600~1000 letter/second
Min Line	0.06 mm
Position Resolution	< 10 urad
Marking Field	50~500 mm
Power Supply	220V; 50-60Hz
Heat Exchange	Air cool
Engraver Software	SAMLight