

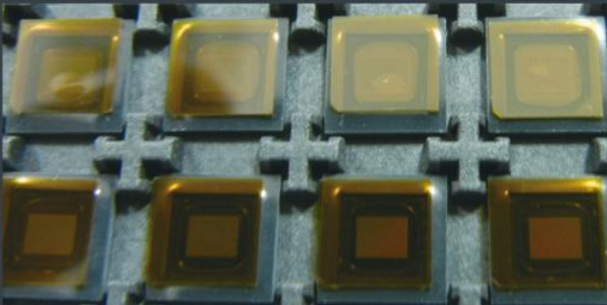
Shutter



Vacuum suction



Protective Film



Film-on-reel



Coreslice adhering device



CMOS IMAGE SENSOR CF-Y540

Sticking Protective Film Machine for CMOS
Non-contact sticking technology and special change kit make sure high adhesion accuracy and low bubble rate.

Automatic Loading and unloading module
Able to load 25 trays, also can replenish CMOS in dynamics.

The track transport module
Adopts a fully enclosed design, and the multi-directional positioning device is mounted on the whole track, which can suppress the tray deformation and enhance the tray positioning accuracy.

High-speed P/P module
Which has single-arm with double-suction, independent lifting, rotating and opening/closing system, can quickly change production through software setting, and modify machine faster.

The dual-platform staggered carrier module
Can cyclic operation. Feeding and transport uninterrupted. A shutter can carry up to 10 pcs, with vacuum and position detection.

The film separating and fitting module
In which the Y/Z patch P/P device is mounted, the feeding, separating and sticking operations are operated independently, and the running is uninterrupted to achieve high-speed sticking.

The film rolling and pressing module
Adopts a pneumatic pressing device to adjust the pressing pressure to ensure that the film can be attached to the surface of the product.

The suction and shutter
Are tailored to the product specifications. The materials and design structure won't damage or contaminate the product.

The PC control system
It is easy and flexible to operate.



Items	Specification Descriptions
Package	CMOS IC Size: 4x4~23x23
Supported Tray	JEDEC TRAY / CHIP TRAY (with tray carrier)
U. P. H. (with Package 6x6)	> 1.2 K/hour
Change Profile Time	< 20 mins (Except the new device setup)
MTBA	60 mins
MTBF	168 hours
Machine Dimensions	1400(W) x 800(D) x 2195(H) mm
Machine Weight	650 kg
Facility Consumption Power	200~240V; 1φ3W; 50/60Hz; 20A
Air Supply	5 kgf/cm², AVG 30 L/min